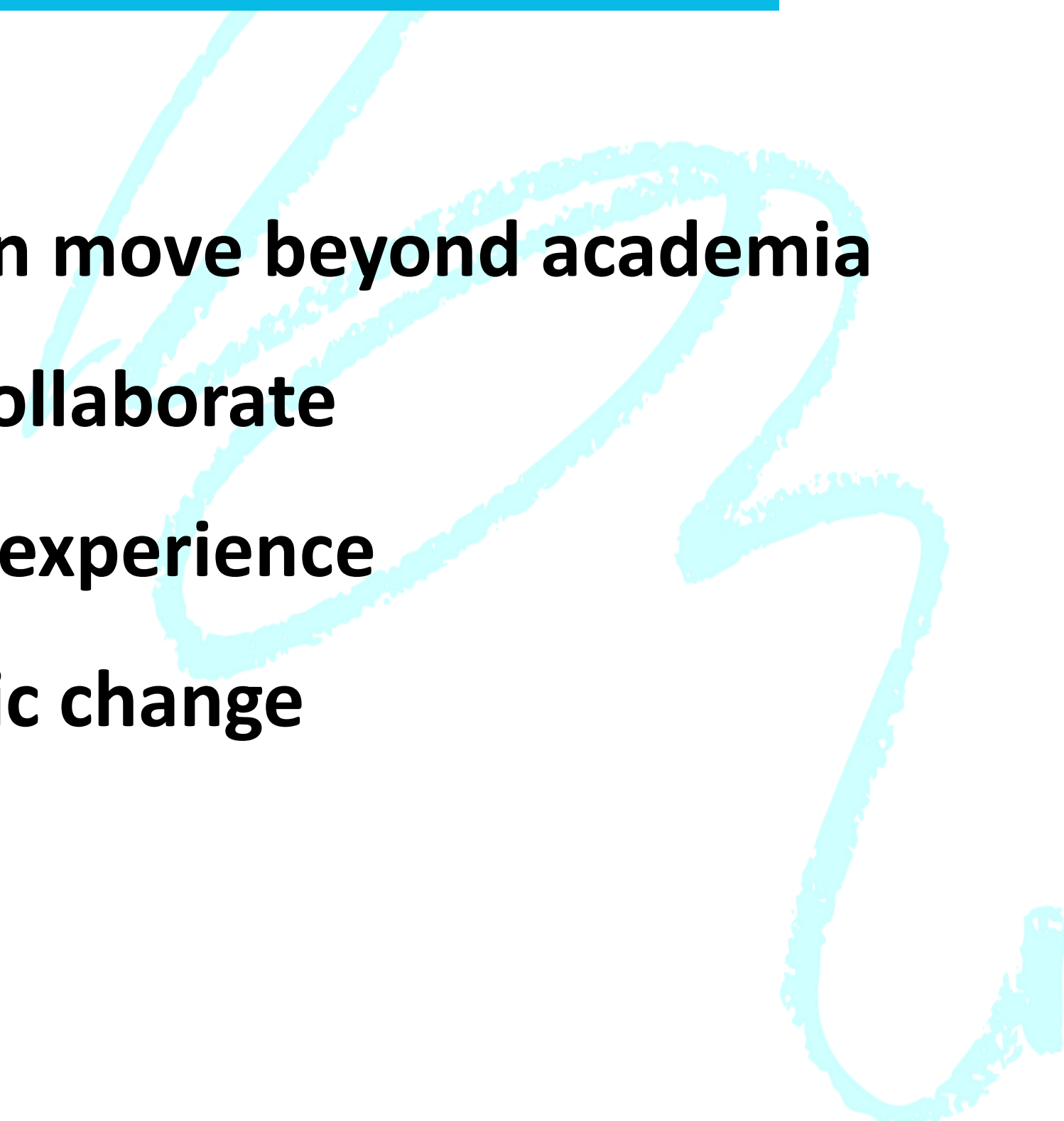
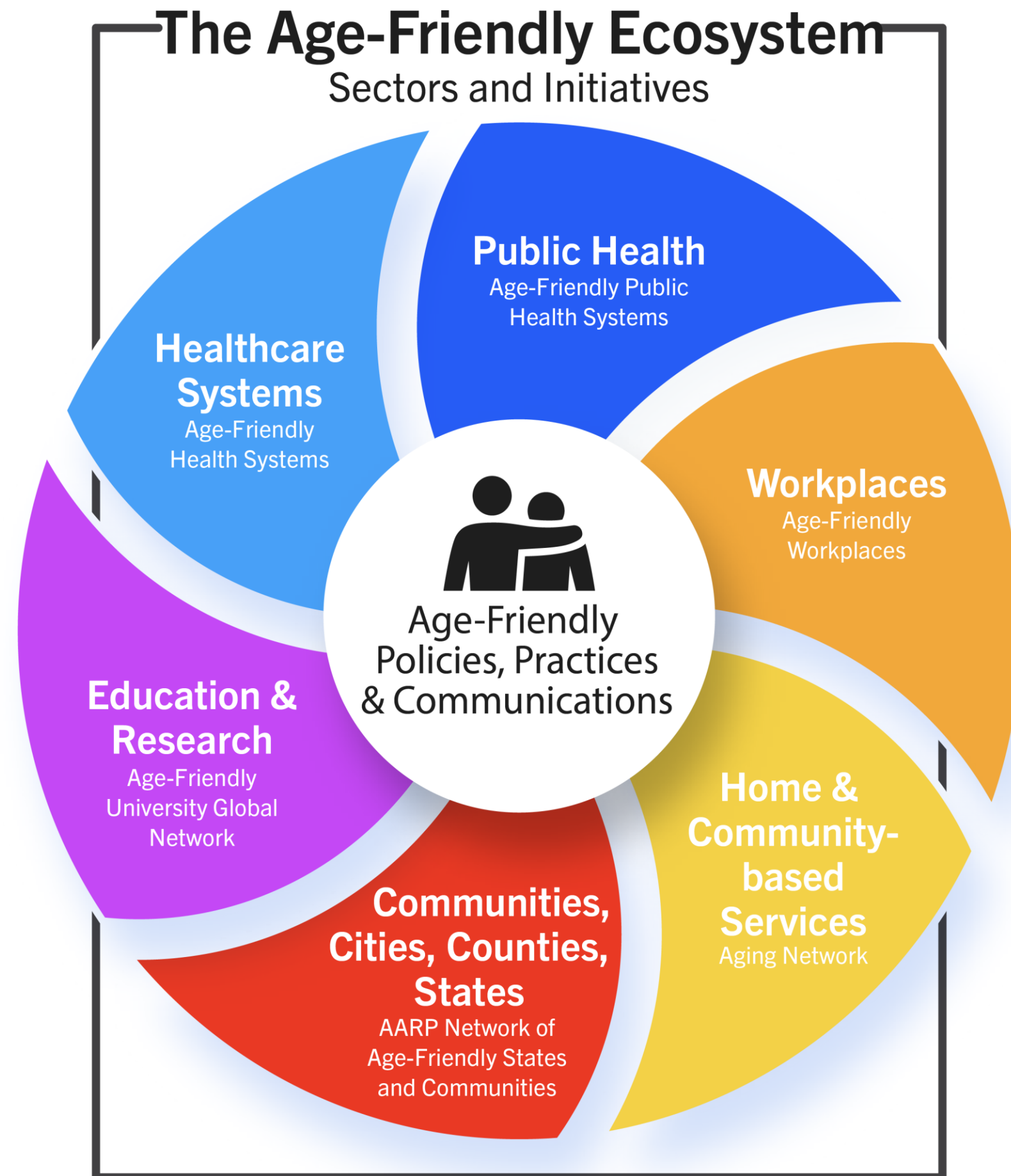


Session Goals

- Explore how the AF concept can move beyond academia
 - Identify real opportunities to collaborate
 - Learn from one another's field experience
 - Inspire sustainable and systemic change
- 

Where
Might You
Make a
Difference?

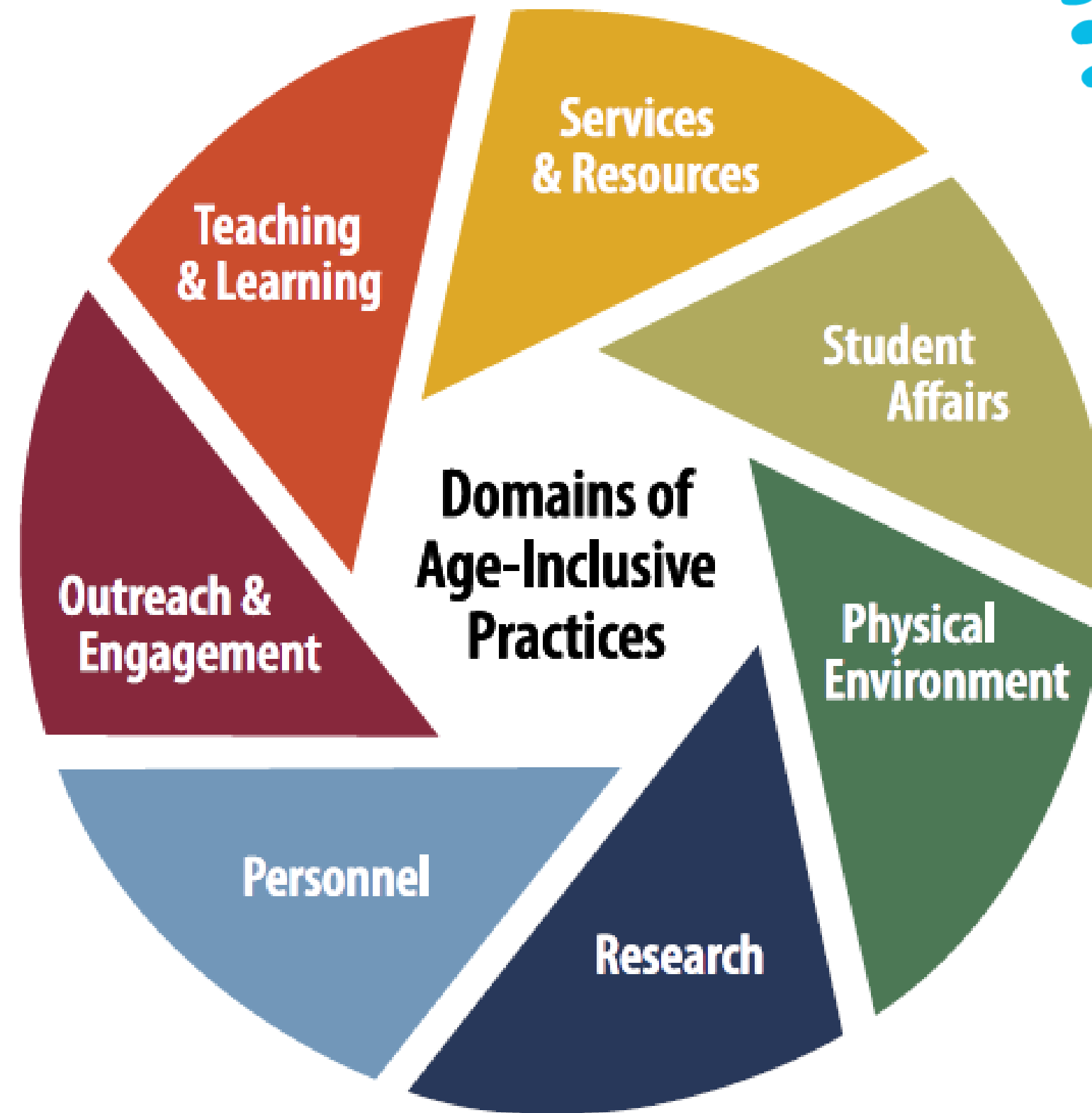


AFU – 10 Guiding Principles

- 1.Participation of older adults in learning and research
- 2.Support for second careers
- 3.Adapted learning to meet the needs of older adults
- 4.Promotion of intergenerational learning
- 5.Access to online learning opportunities
- 6.Aging as part of the university's research agenda
- 7.Education about aging for younger students
- 8.Physical and social accessibility across campus
- 9.Active involvement of retirees in university life
- 10.Inter-organizational collaboration to support aging



Where
Might You
Make a
Difference?



Reflections & Dialogue: Building on Day 1

- Share your own experience with age-friendly environments — or their absence
- What did you find most meaningful yesterday? What challenges came up?
- What opportunities for collaboration can you imagine moving forward





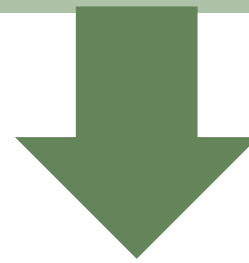
ד"ר יפעת רום - אדריכלית, מתכננת ערים, וגרונטולוגית



Aging independently = A global goal



**Promoting and Preserving the Independence of Older Adults
While Reducing Dependency**



***Ensuring mobility through accessible public
transportation is a critical enabler of this goal***

***The study introduced here, seeks to contribute to this discourse by
examining mobility patterns and barriers among older adults in a socio-spatially diverse region***

Background – Independence vs. Dependency in Old Age

Preserving independence is a core objective in aging and well-being policies

Functional independence is closely tied to the capacity to navigate one's environment and reach essential services

Dependency results from compounded barriers:

- *Physical accessibility*
- *Economic constraints*
- *Social exclusion*
- *Limited access to timely and relevant information*

Modes of Mobility in Later Life

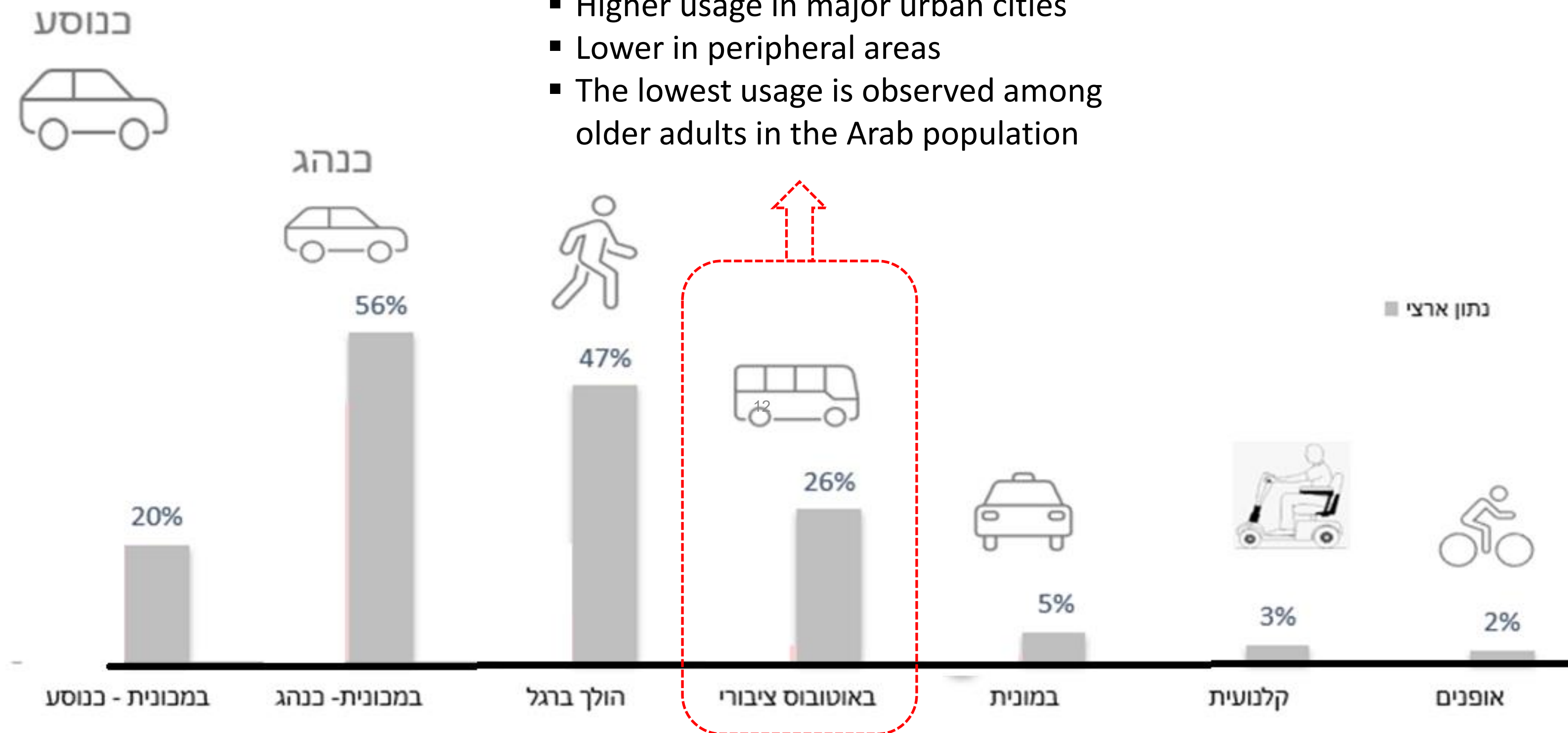
- ***Walking***
- ***Driving a private vehicle***
- ***Being driven by others***
- ***Other devices:***
bicycles, scooters, other adaptive devices, etc.
- ***Public transportation***



Public Transportation Use Among Older Adults

National Snapshot (JDC survey data –Israel, 2022):

ד"ר יפעת רום - אדריכלית, מתכנתת ערים, וגורנטולוגית



Why a Targeted Study Is Needed

Public transport is key to autonomy in older age

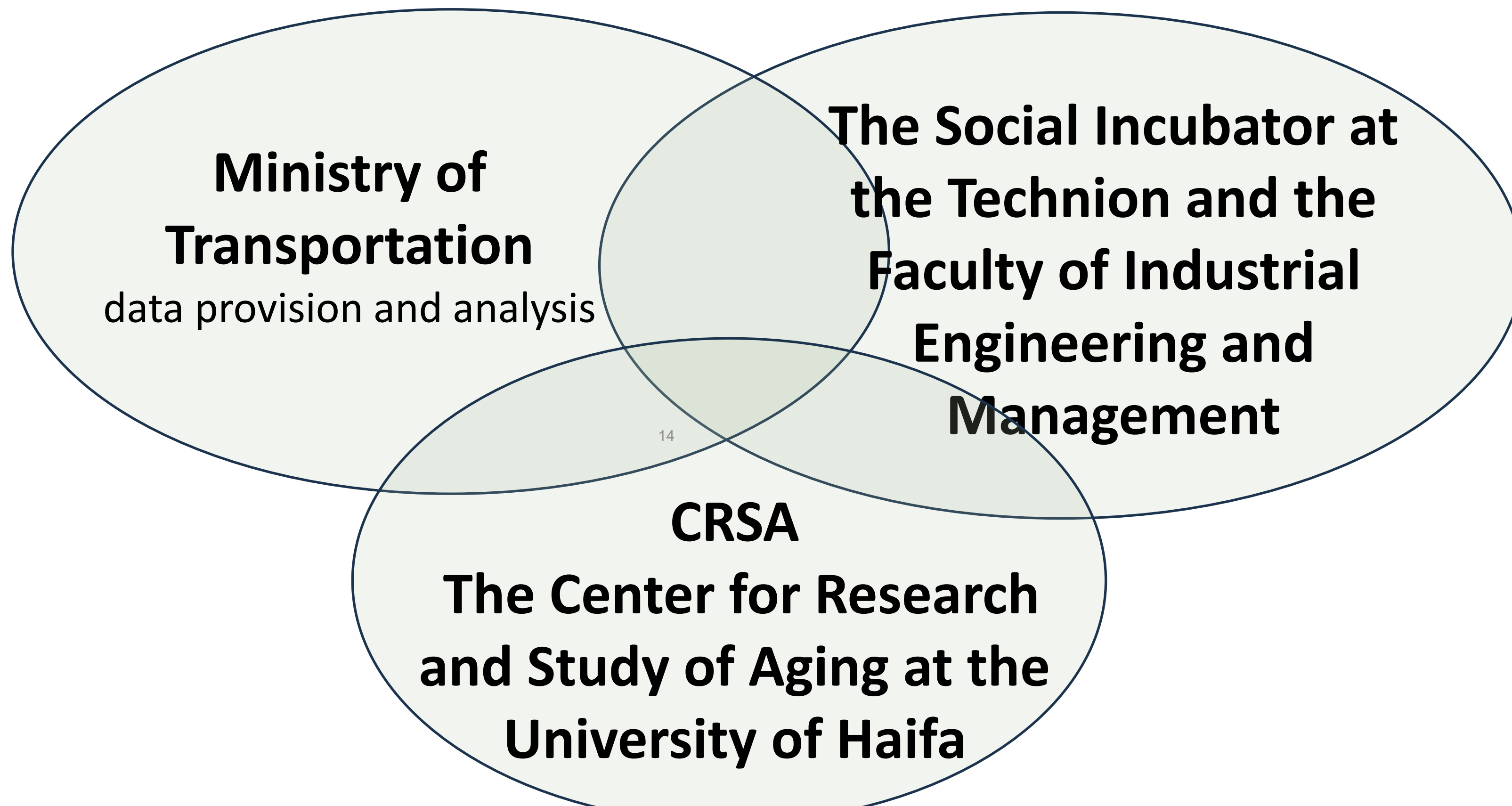
Barriers increase isolation and dependency

Policy requires evidence-based insights

Lack of localized data

- mobility data
- Comparative socio-cultural data - identifying barriers to public transportation use across various cultures and religions

A Unique Cross-Sector Collaboration – Toward Knowledge Generation



Data Infrastructure for Public Transport Analysis

Information received directly from the Ministry of Transportation

Bus stop number

Station type: covered, bench, or pole only

validation data:

- *Validation Location (geographic coordinates)*
- *Passenger categories: children, students, soldiers, seniors, general public*
- *Time of validation: six daily segments, weekdays, months*
- *Type of bus (including maximum passenger capacity)*

Data Infrastructure for Public Transport Analysis

Information retrieved from the Ministry of Transportation's websites

Route data

- Route number
- length
- Number of stops
- Average speed
- vehicle type
- Transfers — changing buses within a one-hour window
- Average density



***The study will inform transportation
planning for aging populations***

Goal:

***equitable, culturally responsive, age-
friendly services***

Thank you!

Dr. Yifat Rom

Environmental Gerontologist

yifatrom@gmail.com



נשמח אם תסרקו את ה-QR
למילוי משוב על הכנס:



סביבות ידידותיות גיל Age-Friendly Environments



הבית
הספרדי
מרכז חיים חדש

